

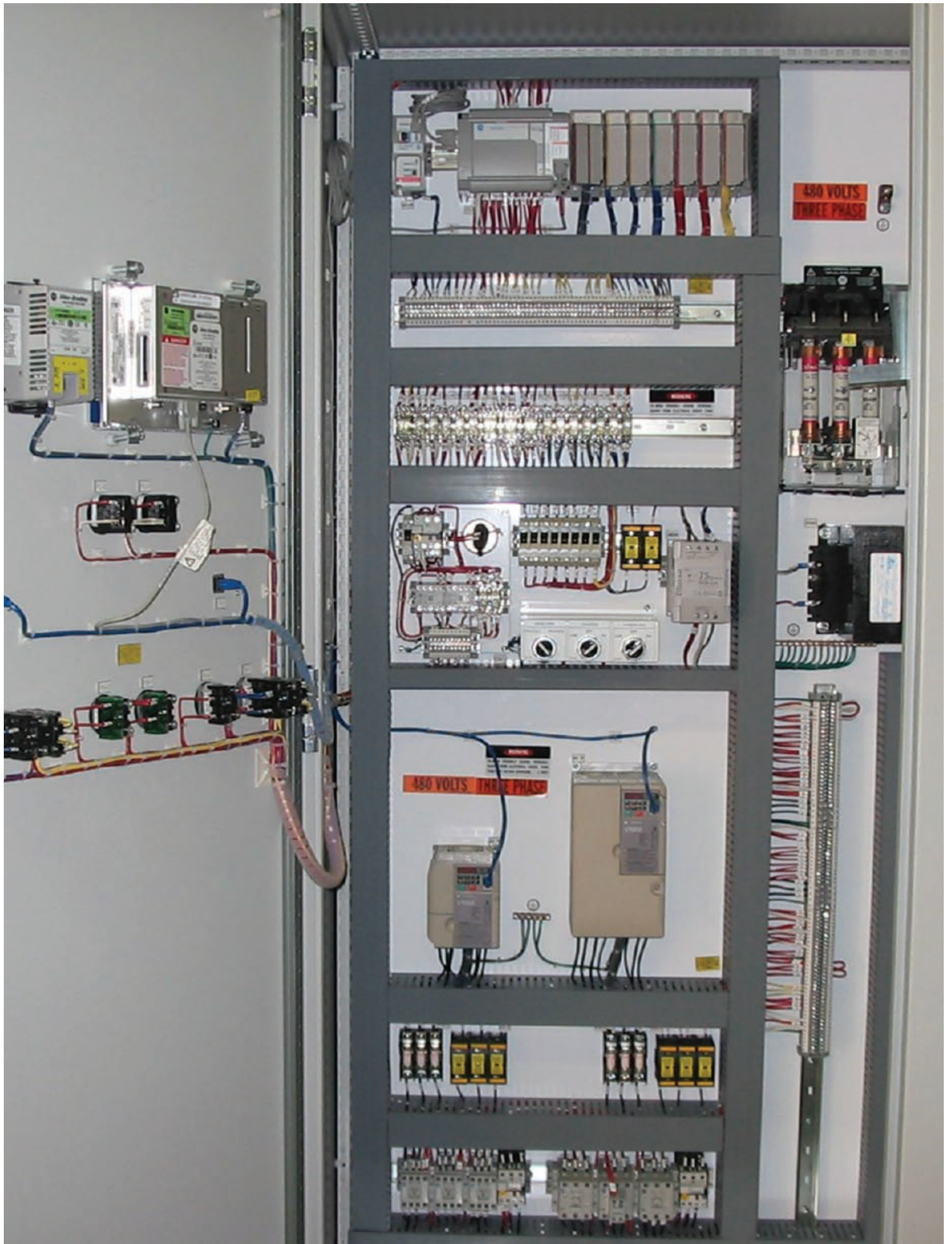
BATCHMASTER

BATCH MASTER II

BATCH CONTROL SYSTEM



**General Glass
Equipment Company**



BATCHMASTER

BATCHMASTER II BATCH CONTROL SYSTEM

Your key to top productivity and a better bottom line

The hallmark of General Glass Equipment is Batch Master II, an integrated batch control system designed and manufactured to provide continuous uptime.

The BMII System was originally developed to operate effectively in the rugged industrial glass manufacturing environment. General Glass has refined and updated the system to meet increased regulatory requirements to ensure product quality. With the BMII, every phase of production can be precisely recorded and documented, from raw output to the final product.

With systems available for every furnace filling configuration and batch charger design, BMII offers multiple levels of control, from 'hands free' to operator-initiated manual operation. By providing total integrated control in a single enclosure, BMII allows manufacturers to increase efficiency and effectiveness while collecting production records required to maintain regulatory compliance.

The system is fitted to operate seamlessly with other General Glass Equipment components, and, in the event of loss of communications, provides automatic backup control redundancy to the master control system to which it is normally slaved.



Benefits:

- Low maintenance cost
- Continuous operation in any environment
- Automatic collection of production records
- Faster, more precise operation and control
- Increased flexibility/expandability

Features:

- Modular free-standing or wall-mount enclosures
- State of the art programmable logic controllers
- Color touch screen HMI's for ease of use
- Variable speed motor drives with in-line bypass
- Automatic process control signal following
- Full motor protection circuitry
- Internally transformed single phase power
- Automatically redundant DC power supplies

Installation Options:

- Single or multiple charger configurations
- NEMA 12 rated enclosures
- Available in UL, CSA & CE Compliant
- Computer programmable controllers
- Expandable I/O
- Remote computer interfacing
- Enhanced versions to incorporate batch wetting control and glass level control
- Inter-system communication via discrete I/O or data highway
- Customization to meet specific requirements

Controls:

- Positioning, speed and timing programmer
- Batch Master II control panels for multi-charger installations

General Glass would enjoy the opportunity to discuss your current project needs and will provide recommendations and detailed installation drawings best suited to your installation.

BATCHMASTER

BATCHMASTER II BATCH CONTROL SYSTEM

General Glass Equipment Company

As the premier supplier of glass manufacturing equipment systems, General Glass Equipment Company boasts an enviable reputation for providing the industry with practical and timely solutions – both in the United States and around the world. Considered standards of the industry, the company's products and services cover virtually every aspect of glass manufacturing, from plant design, construction and project engineering to personnel training and general consultation.

First and foremost, General Glass is an engineering and manufacturing organization with a commitment to excellence that assures customers of superior product performance and profitability. The company is well regarded for its ability to blend technological advancements with experience and expertise achieved during its distinguished history that spans more than 80 years.

Headquartered in southern New Jersey, the company continues in the proud traditions of glassmaking's long and important history in the region where the industry dominated for a century and a half.

Additional information about General Glass is available on the company's web site: www.generalglassequipment.com.



General Glass Equipment Company
P.O. Box 711
Absecon, NJ 08201, USA

Telephone: +1-609-345-7500
Fax: +1-609-652-5700

Email: genglass@generalglassequipment.com
www.generalglassequipment.com

